

# So what really is cyber insurance?

---

Graeme Newman, CFC Underwriting

**“The Internet?  
We’re not interested.”**

Bill Gates, Microsoft Founder, 1993

SEPTEMBER 27, 1999 \$3.50

www.time.com

# TIME

SPECIAL REPORT



# Get Rich \_com

SECRETS OF THE NEW SILICON VALLEY

The **Rewards** Card

0123 4567 8901 23451

A. SMART SAVER

MEMBER SINCE 10/97

EXPIRES 05/18



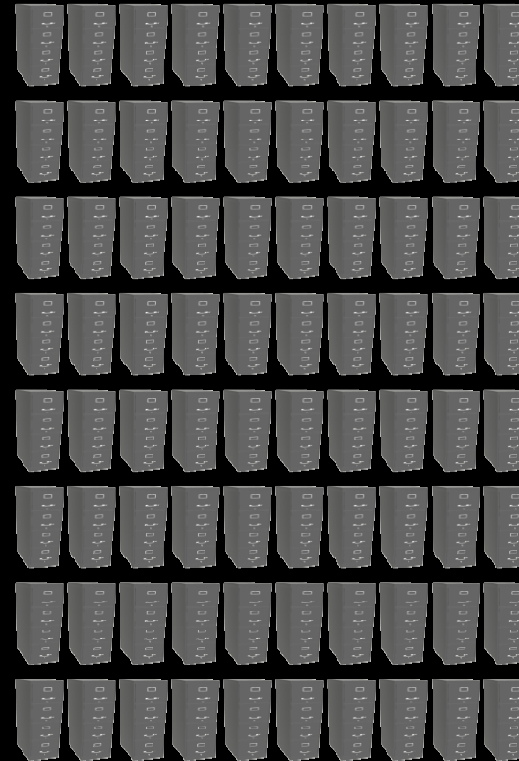
**1 Exabyte =  
1,000,000,000,000,000,000  
Bytes**



# File storage through time...



The 1950s...



=1GB of information



The 1970s...



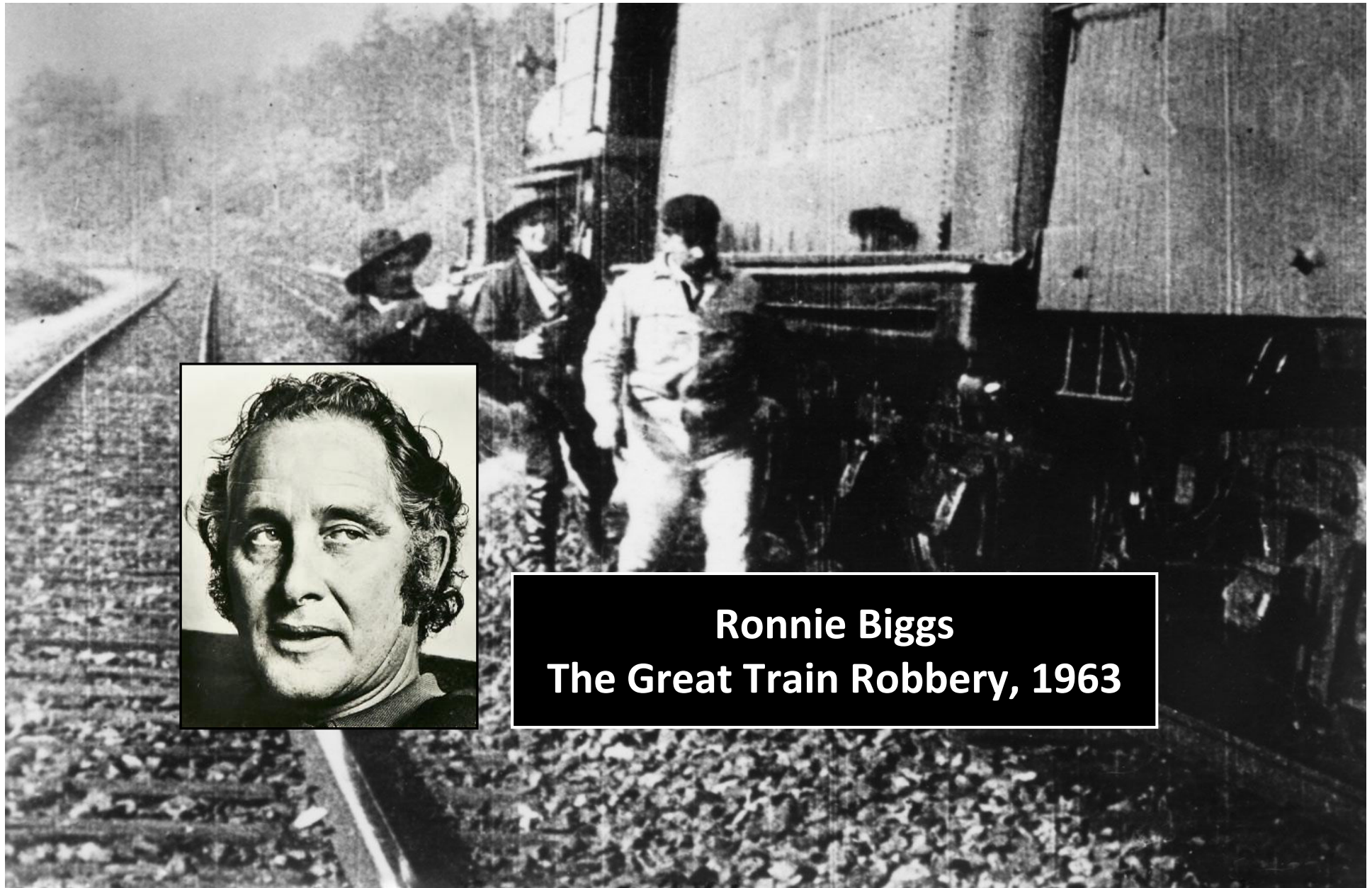
=2GB of information

Today...



**=64GB of information  
(or 5,000 filing cabinets)**



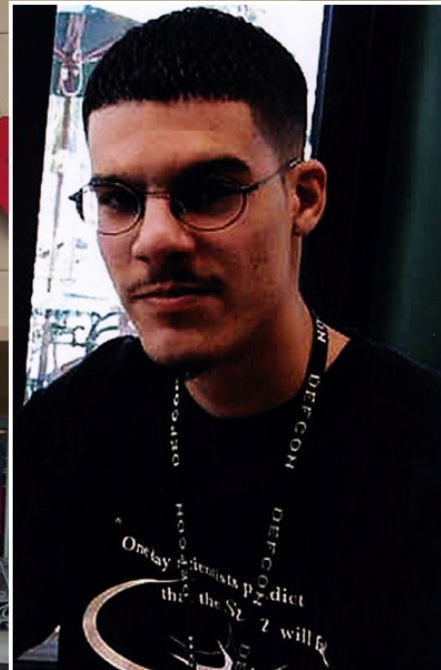


**Ronnie Biggs**  
**The Great Train Robbery, 1963**

A photograph of a T.J. Maxx retail store exterior. The building is a single-story structure with a light-colored facade and a prominent red 'T.J. Maxx' logo. The sky is clear and blue. In the foreground, there is a parking lot with yellow markings and a small tree in a planter.

**T.J. Maxx**

**Albert Gonzales**  
**Heartland Hack, 2010**



**“Target: Data breach catches up to 70m customers”**

January 2014

**“Irish firm LoyaltyBuild hacked for 363,000 credit cards”**

November 2013

**“Barclays gold mine: 27,000 customer files stolen”**

February 2014

**“Orange hacked: 800,000 customer details stolen”**

January 2014

**“IT worker steals 20,000,000 records from South Korea”**

January 2014

**78%**

of all data security breaches in 2012 were against retail, food and beverage, and hotels\*

**96%**

of hackers were after credit card information, SSN or email addresses\*

**210**

Is the average number of days it took for businesses to detect they had a breach\*

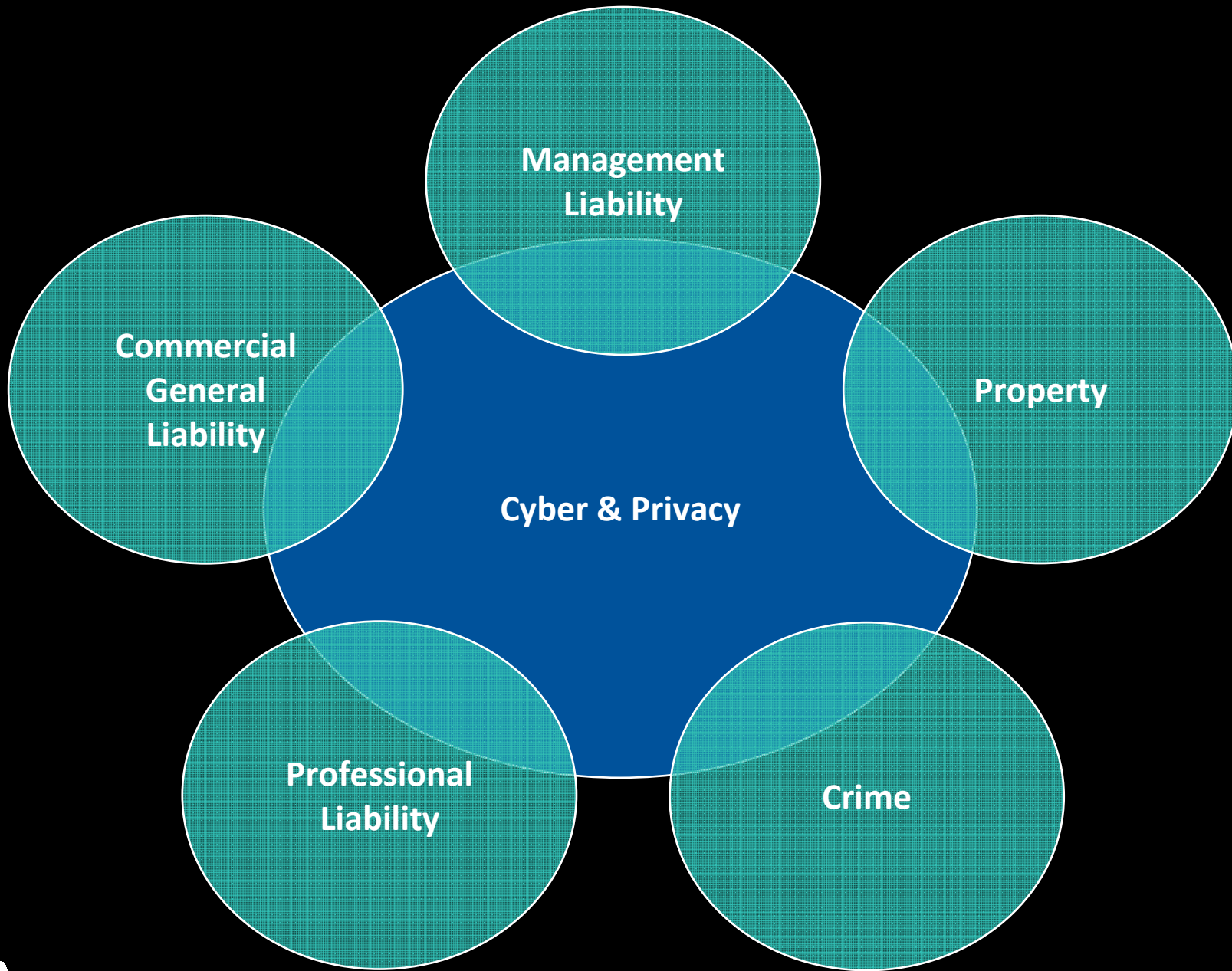
**\$300bn**

Total cost of global cyber crime\*\*



\* According to research presented by Trustwave in their 2013 Global Security Report

\*\* According to research backed by McAfee and conducted by Center for Strategic Studies 2012





**cyber policies**

**“All ~~animals~~ are equal, but  
some are more equal than  
others.”**

George Orwell, Animal Farm

- **Privacy liability & breach notification**
- 

- **Virus / hacking liability (cyber liability)**

- **IP infringement / defamation (media liability)**

- **Technology Errors & Omissions**
- 

**Third party liability**

- **System damage**

- **Business interruption & reputational harm**

- **Cyber crime**

- **Brand protection / crisis management**

**First party loss**

STEVEN SPIELBERG PRESENTS



# BACK TO THE FUTURE

PG

A ROBERT ZEMECKIS FILM



**“There are only two types of  
companies in this world.**

**Those who have been hacked  
and those who ~~will be.~~”**

**don't yet know they've been hacked**

Robert Mueller, Director FBI, March 2012



 85 Gracechurch Street, London EC3V 0AA

 +44 (0) 207 220 8500

 [www.cfcunderwriting.com](http://www.cfcunderwriting.com)

[www.technologyinsuranceblog.com](http://www.technologyinsuranceblog.com)

[www.mediainsuranceblog.com](http://www.mediainsuranceblog.com)

 [gnewman@cfcunderwriting.com](mailto:gnewman@cfcunderwriting.com)

Follow us



Linked in